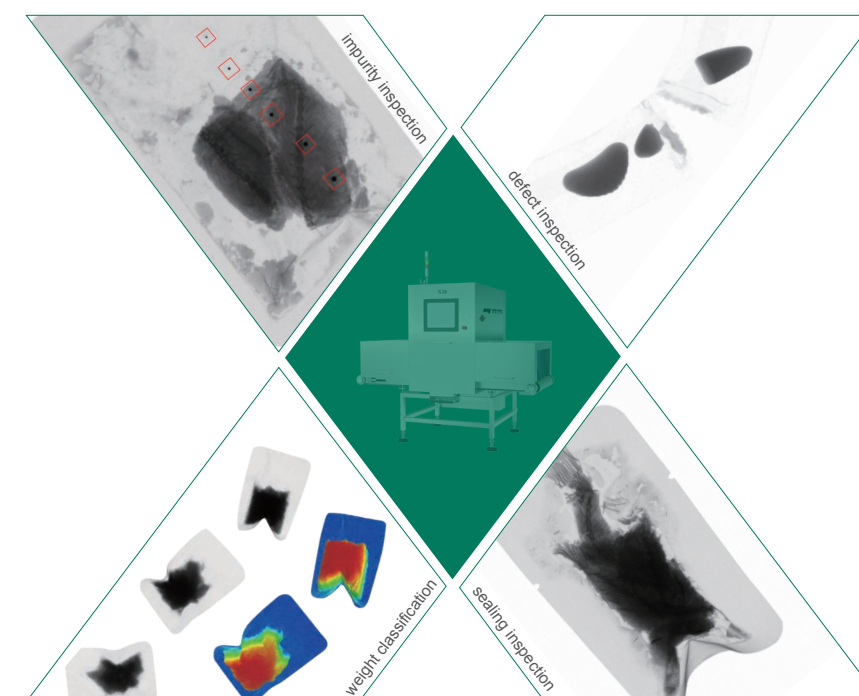




THE ART OF  
NUT AND SEED  
PROCESSING



## Meyer X-ray Inspection Machine



**MEYER** HEFEI MEYER OPTOELECTRONIC TECHNOLOGY INC.

Add:NO.668,West Wangjiang Rd,Hefei,China

Email:sales@meyer-corp.com

Tel/Fax:0086-551-65317548/65306653

Website:www.meyer-corp.com



Web for Color Sorter

@meyersorter

Meyer Marketing

# MEYER X-RAY INSPECTION SOLUTIONS

Meyer, deeply engaged in the field of intelligent identification for nearly 30 years, always walks at the forefront of the industry and is committed to providing intelligent, professional sorting and detection solutions for users. For improving "performance, reliability" and other key factors of products, Meyer research & manufacture innovation platform is building now. Meyer strives to build a high-level R&D talent team, increases investment in technical innovation, enhances engineering ideas, promotes intelligent manufacturing, thus making Meyer tire X-ray inspection machine to the best.

Adhering to the idea of "bring everyone a safe and healthy life", Meyer has expanded X-ray detection applications to cover packaged food inspection, canned food, aquatic products inspection, fish bone, sealing oil leak detection, etc., mainly provide X-ray foreign body detection, defect detection, weight, and the sealing solution, create greater value for customers.

## Food Material



beans nuts preserved fruit vegs cashew seasoning

## Packaged Food



leisure food barrelled instant noodles jelly pickled cabbage additives yeast powder

## Aquatic Products



clam fillet scallop squid arms octopus shrimp paste

## Meat



pork ham ham sausage meat ball beef luncheon meat

## Canned Food

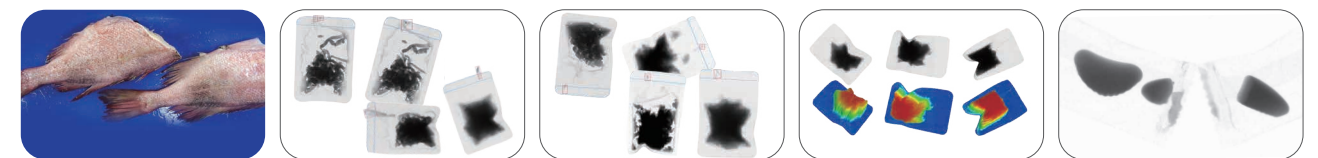


milk powder fruit & vegs can pickles can TCM particles

## Application field



metal stonessing material ceramics glass rubber & plastics



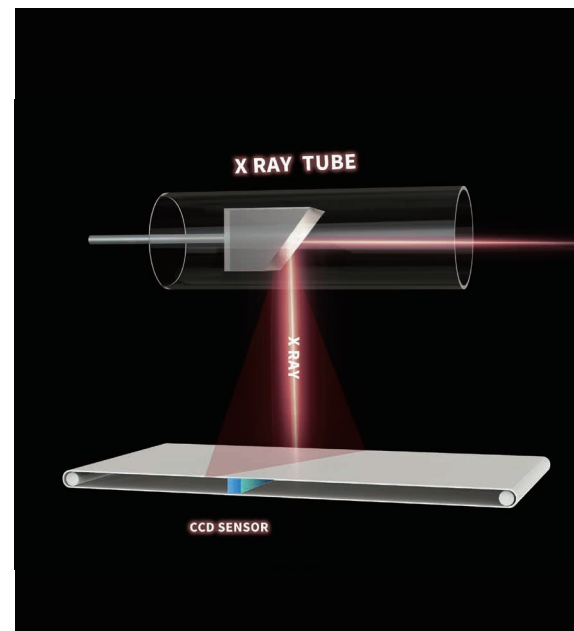
fish bones oil leakage content leakage weight classification mis





### Meyer X-ray inspection machine

Advanced X-ray imaging technology with intelligent recognition algorithm can accurately detect metal impurities and more dense non-metal impurities, product defects, packaging damage and weight detection.



### RECOGNITION SYSTEM

#### X-ray HD Imaging System

The ultra-high resolution sensor combined with Meyer patented enhanced algorithm can identify the gray level difference of the image to ensure that there is no hiding of impurities.

#### Beryllium Window Emitter

High-definition imaging, tiny impurities and impurities of density similar to each other can be easily identified.

#### Ultra High-definition Sensor

The max detection width up to 600mm, equipped with high frequency vibrator, meets the requirements of large output processing.

#### Microfocal Imaging Technology

The imaging resolution is 20% higher than ordinary X-ray, and the imaging of impurities in packaging is clearer.



### SNIPER SYSTEM

#### Maglev Ejector 3.0

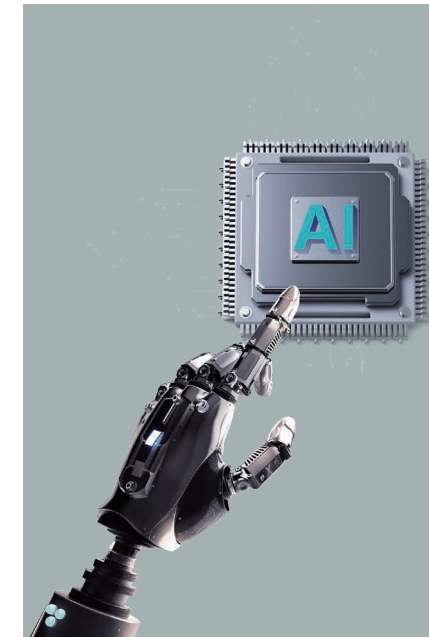
Long service life, the key rejection device. Core patent, intelligent production.

#### Flexible Removal

Precise positioning of impurity center point, more gentle removal, less breakage.

#### Rich Removal Devices

Rich removal devices like blowing removal, swing removal, crawler push plate out, ejector removal, roller push plate removal, etc. are free to apply to different scenes.



### INTELLIGENT SYSTEM

#### One-key Self-learning

Support deep learning, imitation of human brain recognition, matching optimal recognition algorithm, higher detection accuracy.

#### Anti-deviation Design

Effectively avoid conveyor belt deviation, more durable and stable operation.



### INTERACTIVE SYSTEM

#### Extra-simple Interface

The extremely simplified interface makes the operation more worry-free. Built-in learning package, easy access to massive learning content.

#### Remote Contactless Service

Remote debugging, remote control, smart backup, smart checkup.

#### Smart Alarm

Visual LED alarm panel shows the abnormal situation clearly. Fault self-checking, no manual troubleshooting is required.

# INTEGRATED STRUCTURE DESIGN MORE PRECISE AND RELIABLE



Meyer x-ray inspection machine for food material

- Precise Identification**  
350W Beryllium window emitter show clear imaging, easy to identify impurities of similar density
- Outstanding Yields**  
Special wide range detection sensor and high-frequency vibrator satisfy large yields requirement
- Low Consumption, High Profits**  
creative high speed ejector removal device accurately removes impurities
- Wide Application**  
Widely used in the sorting and detection of nuts, kernels, peanuts, beans, dehydrated vegetables, tea, herbs and other bulk materials

# PACKAGED FOOD INSPECTION EXPERT



- Precise Identification**  
350W Beryllium window emitter show clear imaging, easy to identify impurities of similar density
- Rich Removal Devices**  
Equipped with swing removal, turning removal, pushing removal, blowing removal, etc., meet different needs
- Wide Application**  
Apply to impurity inspection in leisure food, baked food, meat, dairy products, frozen food, veg products and packaged products missing detection

Apply To



Red Beans   Seed Kernel   Pistachio   Chilli   Raisin   Dehydrated Veggies   Tea   Cashew   Peanut

Inspection Impurity



Ceramics   Glass   Clod   Sand   Rubber & Plastics   Shell   Metal   Almond Wormhole   Shrunken Nuts

| Name                  | 60XS/80XS               | Name  | 60XS/80XS                         | Name                        | 60XS/80XS                                     |
|-----------------------|-------------------------|---|-----------------------------------|-----------------------------|---|
| Model                 | MY8045-60XS/MY8060-80XS | X-Ray output(W)   | 350 (Max)80kV/8.0mA adjustable    | Conveyor belt speed (m/min) | 90-120 adjustable                             |
| Sensitivity (no-load) | SUS ball≥φ0.3           | Conveyor belt width(mm)   | 470/620                           | Removal device              | 60/80Spray valve                              |
|                       | SUS wire≥φ0.2×2         | Net weight(kg)  | 850/950                           | Main material               | SUS 304                                       |
|                       | Glass ball≥φ1.0         | Configuration(mm)(LxWxH)  | 3450x1320x2370/<br>3450x1460x2380 | Power supply (V)            | Single phase AC220±10%,<br>50/60Hz, 2kw/2.5Kw |
|                       | Ceramic ball≥φ1.0       |   |                                   | Protection Level            | Transmission part IP65, Other IP54            |
| Service environment   |                         | (Ambient temperature)-10~40℃ , Relative humidity30-90%, No condensation,no freezing, upheaval |                                   |                             |   |



Packaged Nuts   Inspection Image   Barreled Instant Noodle   Inspection Image



Jelly   Inspection Image   Meat   Inspection Image   Ham   Inspection Image   Meat Balls   Inspection Image

| Name                  | 400XM             | Name  | 400XM                 | Name                               | 400XM                                   |
|-----------------------|-------------------|---|-----------------------|------------------------------------|---|
| Model                 | MY8045-XM         | Size of materials(mm)   | Width≤445, Height≤200 | X-Ray output(W)                    | 350 (Max)80kV/8.0mA adjustable          |
| Sensitivity (no-load) | SUS ball≥φ0.3     | Conveyor belt width(mm)   | 510                   | Conveyor belt speed (m/min)        | 10-80 adjustable                        |
|                       | SUS wire≥φ0.2x2   | Configuration(mm)(LxWxH)  | 1100x1200x2050        | Removal device                     | Selected according to material          |
|                       | Glass ball≥φ1.0   | Net weight(kg)  | 500                   | Main material                      | SUS 304                                 |
|                       | Ceramic ball≥φ1.0 | Load(kg)  | 10                    | Power supply (V)                   | Single phaseAC220V±10%,<br>50/60Hz, 2kw |
| Service environment   |                   | (Ambient temperature)-10~40℃ , Relative humidity30-90%, No condensation,no freezing, upheaval |                       |                                    |   |
|                       |                   | Protection Level  |                       | Transmission part IP66, Other IP65 |   |



# FOR LARGE PACKAGED FOOD INSPECTION



- Wide Detection Range**  
 480W high-power high-pressure emitter, stronger to penetrate heavy materials, support large packaged food detection  $\leq 25\text{kg}$
- High Inspection Accuracy**  
 Ultra clear image recognition algorithm is designed for impurity inspection in heavy material, outstanding effect
- Stable Operation**  
 Automatic anti-deviation conveyor belt design avoids the belt deviation

Meyer x-ray inspection machine for large packaged food

# DOUBLE LIGHT SOURCE IMAGING DESIGNED FOR CANNED FOOD INSPECTION



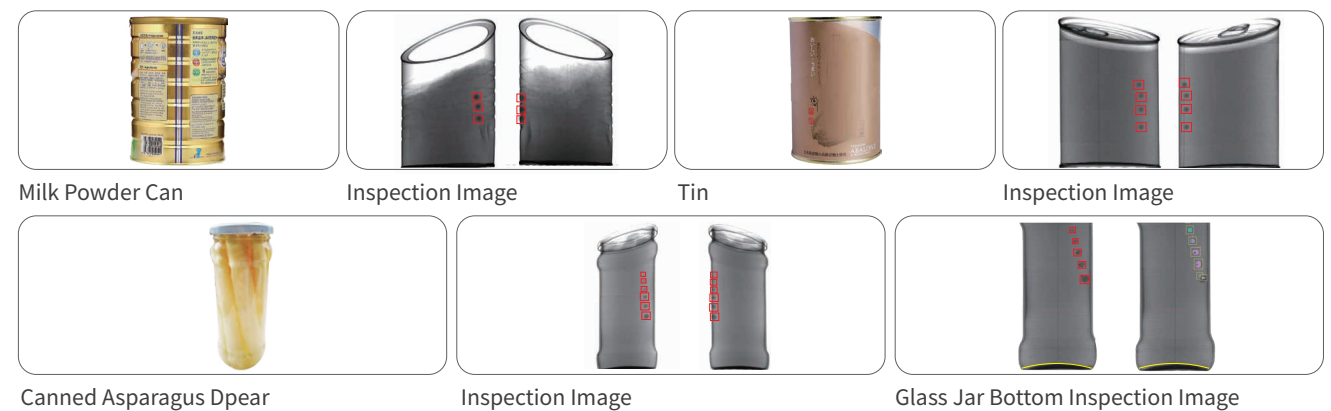
- Wide Detection Range**  
 Equipped with dual high-power emitter, eliminate blind area of detection, and the impurity at the bottom can be easily inspected
- Reliable Structure**  
 Integrated design of main part, more stable operation
- Wide Application**  
 Suitable for detecting impurities in bottles, cans and boxes delivered in upright form

Meyer X-ray inspection machine for canned food



Additives      Inspection Image      Yeast Powder      Inspection Image

| Name                     | 580XM                             | Name   | 580XM  | Name                           | 580XM   |
|--------------------------|-----------------------------------|--|--|--------------------------------|---|
| Model                    | MY12060-XM                        | Size of materials(mm)  | Width $\leq 580$ , Height $\leq 300$<br>Trapezoidal detection area | X-Ray output(W)                | 480W(Max)120kV/8.0m adjustable<br>optional350W(Max)80kV/8.0m adjustable |
| Sensitivity<br>(no-load) | SUS ball $\geq \phi 0.3$          | Conveyor belt width(mm)  | 700  | Conveyor belt speed<br>(m/min) | 10-40   |
|                          | SUS wire $\geq \phi 0.2 \times 2$ | Configuration(mm)(LxWxH)   | 2250x1380x2110   | Removal device                 | Alarm and pneumatic push plate rejection                                |
|                          | Glass ball $\geq \phi 1.0$        | Net weight(kg)   | 700  | Main material                  | SUS 304   |
|                          | Ceramic ball $\geq \phi 1.0$      | Load(kg)   | 50   | Power supply (V)               | Single phase AC220V $\pm 10\%$ , 50/60Hz, 2.5kw                         |
| Service environment      |                                   | (Ambient temperature)-10~40°C , Relative humidity30-90%,<br>No condensation,no freezing,upheaval |  | Protection Level               | Transmission part IP65, Other IP54                                      |



Milk Powder Can      Inspection Image      Tin      Inspection Image  
Canned Asparagus Dpear      Inspection Image      Glass Jar Bottom Inspection Image

| Name                     | 2XLG/XLG                          | Name   | 2XLG/XLG                                | Name                           | 2XLG/XLG                                       |
|--------------------------|-----------------------------------|--|---|--------------------------------|--|
| Model                    | MY12015D-XL                       | Size of materials(mm)  | Diameter $\leq 150$ , Height $\leq 250$ | X-Ray output(W)                | 480(Max)120kV/8.0mA adjustable                 |
| Sensitivity<br>(no-load) | SUS ball $\geq \phi 0.3$          | Conveyor belt width(mm)  | 150                                     | Conveyor belt speed<br>(m/min) | 10-50adjustable                                |
|                          | SUS wire $\geq \phi 0.2 \times 2$ | Configuration(mm)(LxWxH)   | 5000x1460x1980                          | Removal device                 | Alarm and pneumatic push plate rejection       |
|                          | Glass ball $\geq \phi 1.0$        | Net weight(kg)   | 900                                     | Main material                  | SUS 304  |
|                          | Ceramic ball $\geq \phi 1.0$      | Load(kg)   | 10                                      | Power supply (V)               | Single phaseAC220V $\pm 10\%$ , 50/60Hz, 4.5kw |
| Service environment      |                                   | (Ambient temperature)-10~40°C , Relative humidity30-90%,<br>No condensation,no freezing,upheaval |   | Protection Level               | Transmission part IP65, Other IP54             |

REVEAL THE HIDDEN FISHBONE



Meyer Ultra HD X-ray inspection machine

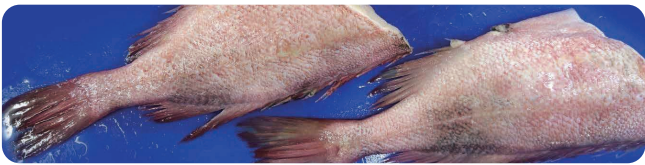
- High Inspection Accuracy**  
Equipped with ultra-high resolution sensor, the minimum detection accuracy can reach 0.05mm
- Faster Recognition Of Impurities**  
Equipped with 4K HD screen, clearer image display
- Wide Application**  
Suitable for impurity detection of fish bone, infant food and other products with high standards

ACCURATE OIL & CONTENT LEAKAGE  
ELIMINATION ONE FOR VARIOUS  
APPLICATION



New Meyer X-ray inspection machine for oil leakage

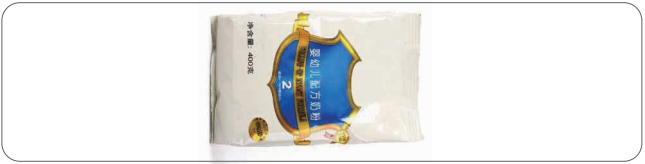
- High Inspection Accuracy**  
Microfocus imaging system achieves higher X-ray imaging resolution, more clear to see the packaging
- Fast Imaging Speed**  
X-ray high resolution imaging speed up to 40m/min, higher efficiency
- Multiple Use**  
Oil leakage, content leakage, weight classification, impurity detection, suitable for multiple scenarios



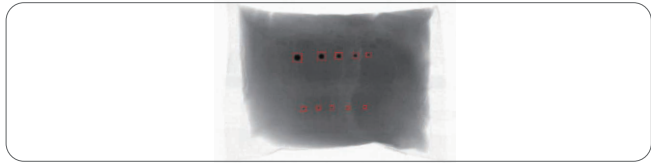
Fillet



Inspection image

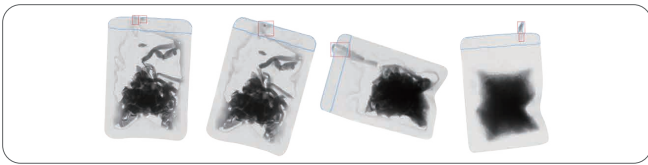


Baby milke

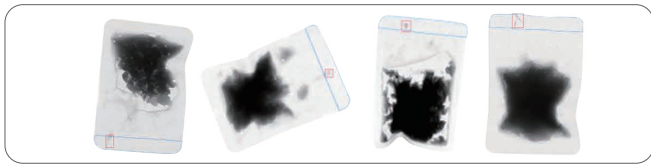


Inspection imag

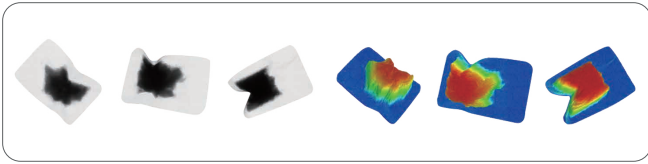
| Name  | 2XMF/XMF  | Name  | 2XMF/XMF  | Name                       | 2XMF/XMF   |
|---|-----------|---|---|----------------------------|--|
| Model                                       | MY8045-XM | Size of materials(mm)   | Narrow type width≤190 , Wide type width≤390, Height≤200 | X-Ray output(W)            | 350(Max)80kV/8.0mA adjustable  |
| Sensitivity<br>(no-load)<br>可辨识铁线<br>≥φ0.05 |           | Conveyor belt width(mm)   | 440   | Conveyor belt speed(m/min) | 10-20  |
|   |           | Configuration(mm)(LxWxH)  | 1000x1150x2100  | Removal device             | (fishbone detection) Auxiliary manual, automatic identification of fishbone assistance optional, other detections can be equipped with rejecting devices |
|   |           | Net weight(kg)  | 500   | Main material              | SUS 316L   |
|   |           | Load(kg)  | 10  | Power supply (V)           | Single phase AC220V±10%, 50/60Hz, 2kw  |
| Service environment                         |           | (Ambient temperature)-10~40℃ , Relative humidity30-90%, No condensation,no freezing, upheaval |   | Protection Level           | Transmission part IP65, Other IP54   |



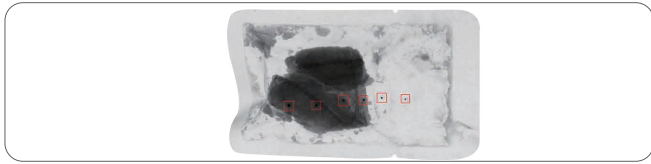
Oil leakage Inspection



Content Leakage Inspection



Weight Classification



Impurity Detection

| Name                     | 200XMM   | Name                       | 200XMM                             |
|--------------------------|--|----------------------------|------------------------------------|
| Model                    | MY4022-XM  | Belt speed(m/min)          | 40 adjustable                      |
| Configuration(mm)(LxWxH) | 1175x980x1900  | Throughput                 | (Max)220packs/min                  |
| Detected material(mm)    | About 100x70, Aluminum foil small package                            | Human-computer interaction | 17-inch LCD screen                 |
| Function                 | Sealing oil leakage, weight classification, foreign object detection | X-ray leak                 | < 1μSV/h                           |
| Size of materials(mm)    | Width≤200, Height ≤50  | Waterproof level           | Transmission part IP66, Other IP65 |

# MY X-RAY SECURITY AND RELEVANT REGULATIONS

## Food Safety

According to relevant regulations, X-ray dose for food should be lower than 0.1Gy, that will not affect the quality of food. As the statement of Food Health Organization in 1980, "there is no problem about toxicity, nutrition and microorganism for the food under X-ray dose below 10KGy".

▶ Meyer X-ray Inspection Machine  
Maximum X-ray dose is **0.001G**

▶ Operation staff whole body exposure  
5mSv\*1000/(365 days\*8 hours)=**1.71uSv/h**

## Personal safety

According to *Ionizing Radiation Failure Prevention Rules Japan*, administrative areas and operation managers need to be set up when accumulative X-ray leakage dose reaches 1.3mSv in three months.

The X-ray leakage of our machine is 1μ Sv/h or less. For the value is lower than 1.35 mSv/3 months, there is no need to set up administrative areas and operation managers.

(example)

Three months' X-ray leakage calculation.

The same staff works 5 days a week and 10 hours a day 3 months, 13 weeks:

1 Sv/h\*10 hours\*5 days\*13weeks=0.65 mSv/3 months

★ In accordance with Chinese national standards

# MY CUSTOMER CASE

Thanks for your smart choice.

|                  |   |   |   |   |   |   |
|------------------|---|---|---|---|---|---|
| Cashew           |    |    |    |    |    |    |
| Leisure Food     |    |    |    |    |    |    |
| Aquatic Products |    |    |    |    |    |    |
| Meat Products    |    |    |    |    |    |    |
| Canned Food      |  |  |  |  |  |  |
| Fast Food        |  |  |  |  |  |  |
| Spice            |  |  |  |  |  |  |
| Grains           |  |  |  |  |  |  |
| Tea&Fruits       |  |  |  |  |  |  |
| Diary Products   |  |  |  |  |  |  |





## Meyer —China's leading X-ray inspection machine supplier

World leading intelligent inspection equipment supplier  
China 500 Most Valuable Listed Companies  
Hurun China 500 Most Valuable Private Companies  
Major High Technology Expertise under China Torch Program  
60,000+ equipment are in operation worldwide  
Products cover 100+ countries and regions

National Science & Technology Progress Award  
(second award)  
National Innovative Enterprise  
National Technological Innovation Model Enterprise  
National Intellectual Property Demonstration Enterprise  
National Post-doctoral Research Workstation  
National Certified Enterprise Technology Center

## THE 1ST SMART FACTORY IN THE INDUSTRY

STANDARDIZATION MODULARIZATION INTELLIGENTIZATION DIGITALIZATION



Sheet metal flexible processing production line



Color sorter final assembly line



Unmanned maglev ejector production line



Chute assembly robot workstation



Automatic circuit board SMT production line



Automatic frame powder spraying production line

- Over 20 automatic intelligent production lines and unmanned core component workshops
- World-leading machining equipment ensure high consistency and precision of parts
- Advanced production technology and strict debugging ensure the stable performance of core components
- The only high-standard intelligent painting workshop in the industry makes Meyer color sorter more corrosion-resistant and more environment-friendly
- The only final assembly line in the industry, with the CNC system automatically monitoring the whole process, boosts production's efficiency
- Making products to the best, whether 1 or 10,000 sets, always with the consistent quality.

