



Meyer Color & Polymer Sorter

Renewable Resources Sorting Solutions

MASETO, S.L.U
C/ Mariano Benlliure 9
03009 Alicante (Spain)
Tf.: +34 965 930 077



MEYER INTELLIGENT SORTING SOLUTION

Engaged in the intelligent sorting industry for nearly 30 years in the leading position, Meyer is always committed to providing intelligent and professional sorting solutions for customers. To improve the "performance, reliability" and other key indicators of products, Meyer Research & Manufacture Innovation Platform is built. It aims to create a high-level R & D talent team, increase investment in technology innovation, strengthen engineering, promote intelligent manufacturing, thus making Meyer color&polymer sorter to the best.

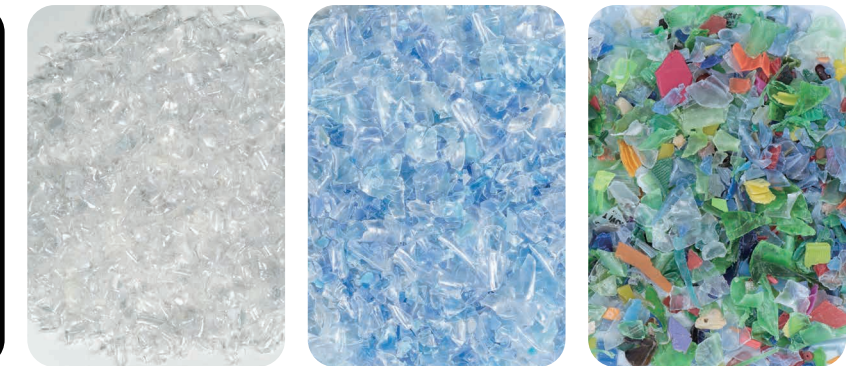
Adhering to the concept of "Always focus on customers' demand with sincerity", Meyer focuses on "make recycling infinite and value eternal" in renewable resources like plastic waste. Meyer's products show nice performance and receive high praise in many countries. Especially in plastic waste sorting, Meyer pioneered the PET all-form sorting solution, which includes the whole bottle, bottle flakes, bottleneck, bottle scraps and caps. Meyer's products feature high cleaning rate, large throughput, high stability and reliability.



Bottle color & polymer sorting



PET flakes color & polymer sorting



Aging and fluorescent flakes in AAA-level PET



HDPE flakes color & polymer sorting



Bottle cap color sorting



Plastic pellets sorting



Color & polymer sorting of the plastic shell for daily packages and household appliances



BRAND NEW MEYER COLOR SORTER DEFINES A NEW STANDARD FOR INTELLIGENT SORTING



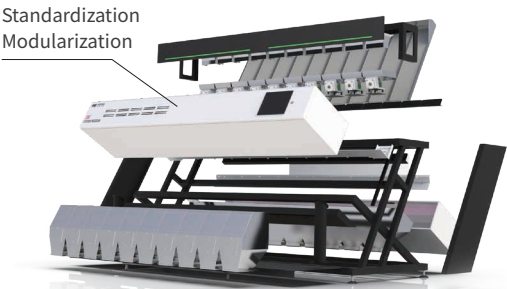
THREE ADVANTAGES

PART 1

MACHINE STRUCTURE IS HIGHLY STABLE AND RELIABLE

Engineering Design
Manufactured by Smart Factory
Standardized Production

IMPROVE RELIABILITY, ENGINEERING DESIGN IS THE PRIORITY



More than **70%**
parts realize
intelligent production

Parts general rate
increases to
70%

IMPLEMENTING RELIABILITY, INTELLIGENT MANUFACTURING IS THE KEY

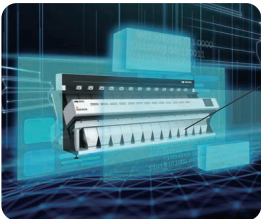


PART 2

OPERATION PROCESS IS HIGHLY STABLE AND RELIABLE

The new digital electrical topology structure controls the sudden failure of the core components from the source to ensure the stable and reliable operation of the production line.

THE NEW DIGITAL ELECTRICAL TOPOLOGY STRUCTURE



Reduce redundant control modules of traditional color sorters by **45%**

High integration, strong anti-interference ability

Provide a standardized PLC interface, which can be connected to the factory's centralized electronic control system to help the digital operation of the production line

INNOVATIVE REMOTE CONTACTLESS SERVICE



Remote Control

Users can adjust color sorting parameters, switch color sorting solutions, and grasp operating indicators such as output and processing accuracy online



Smart Backup

The user can back up the ideal sorting parameters and solutions to the cloud at any time, so that can be called in time in subsequent processing



Smart Checkup

Real-time monitoring and correction of signals, lights and the operation effect of key components to help equipment run stably



Remote Debugging

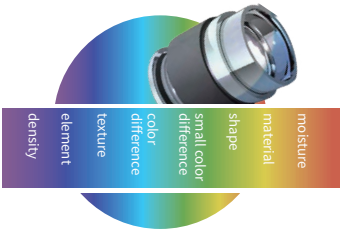
When the effect is abnormal, you can seek online service experts for remote debugging, so that the equipment can be restored to a good running state in

PART 3

SORTING EFFECT IS HIGHLY STABLE AND RELIABLE

Reliability with independent technological innovation makes the performance advantages of high accuracy, low rejection ratio and large throughput stable, and the value of Meyer color sorter has been greatly improved.

MEYER CORE TECHNOLOGIES

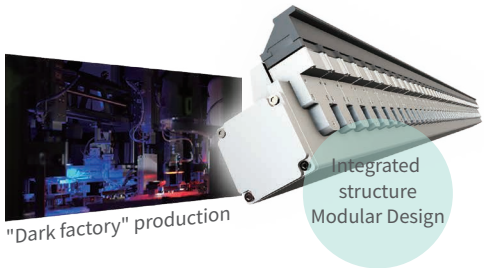


Meyer Multispectrum Confocal System

Meyer multispectrum confocal system provides multi-dimensional sorting and detection solutions such as color, shape, texture, material, etc. to meet users' differentiated processing needs.

Meyer Maglev Ejector 3.0

Ultra-high-speed response, shorter start time of ejector for higher accuracy
Millisecond-level start and stop, gas supply and cutoff completely, resulting in greater output and lower loss



The minimum recognition area can reach 0.0004mm²

Meyer Ultra HD Imaging System

Low-distortion camera lens, with ultra-high-definition resolution, ensure clearer identification of materials

Meyer Deep Learning Technology

Complex defects detect in complex scenarios and meet customers' changing sorting needs

Data Advantage

Nearly 10,000 connected devices worldwide

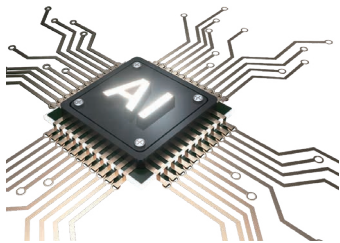
Platform Advantage

Key software enterprises in national planning

Innovation Advantage

Breaking through the industry bottleneck of small target detection

Large sample library for the sorting industry



MORE INTELLIGENT TECHNOLOGIES



Sniper system



Smart vacuum device



Smart alarm



Extremely simple operation



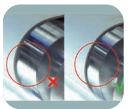
Spectrum confocal system



Infrared image system



PID system



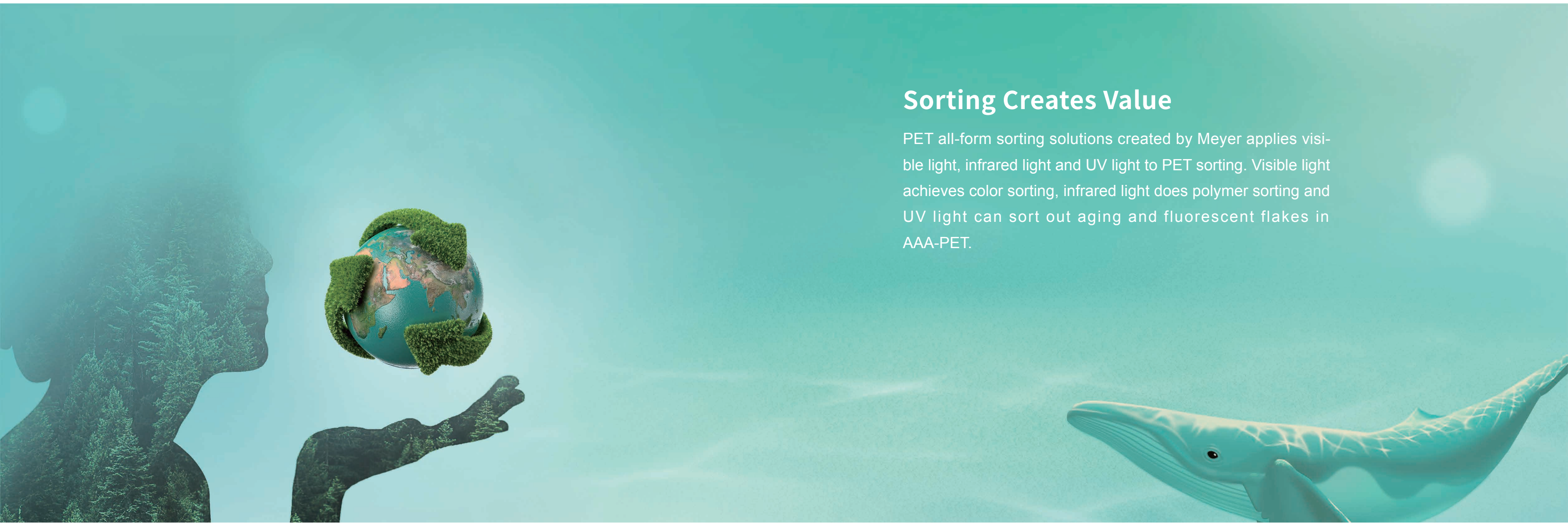
Self-adjust transmission system

MEYER PET ALL-FORM SORTING SOLUTIONS



Sorting Creates Value

PET all-form sorting solutions created by Meyer applies visible light, infrared light and UV light to PET sorting. Visible light achieves color sorting, infrared light does polymer sorting and UV light can sort out aging and fluorescent flakes in AAA-PET.



Bottle sorting



Bottle scrap sorting



Bottle flake sorting



Bottleneck sorting



Bottle cap sorting



Plastic pellet sorting

MULTI-FUNCTIONAL COLOR & POLYMER SORTING EXPERT



- Rich configuration for color & polymer sorting
- Extra-simple operation, easy to learn and operate
- High pure accept rate, the minimum identification accuracy is up to 1mm
- Outstanding throughput, up to 3-6 tons/hrs
- Support re-sorting and triple sorting, higher purification and lower consumption
- Standard and modular design in the intelligent factory

Meyer Color & Polymer Sorter·CI Series

· CI series is used in the color and polymer sorting of plastic flakes. With rich configuration for choice, CI series can provide abundant plastic flake sorting solutions based on customers' requirements.

CI STANDARD Equipped with visible light compound multispectral confocal technology and InGaAs sensor technology, CI standard shows better sorting performance for light blue and light yellow flakes and separate PET/non-PET(or PP/PE).

Config A Equipped with Meyer infrared system, this configuration is specialized in polymer sorting, including PET/non-PET(or PP/PE) sorting.

Config B Equipped new multispectral confocal technology and high-resolution camera, this configuration features color & polymer sorting and excellent non-PET plastic identification accuracy. The minimum identification accuracy is up to 0.3mm.

Config C Equipped new multispectral confocal technology 3.0 and NIR infrared system, this configuration features color & polymer sorting and over 15 kinds of non-PET plastics detection. It can remove PVC/PS/PC/PA/PP/PE/ABS/PLA/PPSU/TRITAN and others.

Name	Model	Power (KW)	Voltage (V)	Air pressure (MPa)	Air Consumption (m³/min)	Dimension (L*W*H)(mm)	Weight (kg)
CI	6SXZ-180CI-GY	3.1	180~240 50Hz	0.6~0.8	<3.0	1628×1700×2030	1400
	6SXZ-300CI-GY	4.6	180~240 50Hz	0.6~0.8	<4.5	2220×1700×2030	1700
	6SXZ-480CI-GY	7.0	180~240 50Hz	0.6~0.8	<6.5	3108×1700×2030	2000

COST-EFFECTIVE COLOR SORTING EXPERT WITH HIGH CAPACITY



- Support color sorting and color purity classification
- Extra-simple operation, easy to learn and operate
- Stepless dimming system can remove impurities like discolored flakes and aluminum flakes
- Outstanding throughput, up to 3-8 tons/hrs
- Support re-sorting and triple sorting, higher purification and lower consumption
- Standard and modular design in the intelligent factory

Meyer Color Sorter·CG.P Series

· CG.P series is used in flake color sorting like PET bottles, bottle caps, household appliances, storage batteries, PVC, HDPE, WEEE and other materials. It features large throughput, nice sorting outcome, stable performance and others.

Name	Model	Power (KW)	Voltage (V)	Air pressure (MPa)	Air Consumption (m³/min)	Dimension (L*W*H)(mm)	Weight (kg)
CG.P	6SXZ-240CG2-GY	2.0	180~240 50Hz	0.6~0.8	<4.0	1891×1564×2020	1120
	6SXZ-360CG2-GY	2.7	180~240 50Hz	0.6~0.8	<5.5	2533×1564×2020	1400
	6SXZ-480CG2-GY	3.4	180~240 50Hz	0.6~0.8	<6.5	2991×1564×2020	1750
	6SXZ-600CG2-GY	4.0	180~240 50Hz	0.6~0.8	<8.0	3583×1564×2020	2090
	6SXZ-780CG-GY	5.0	180~240 50Hz	0.6~0.8	<10.0	4445×1620×2020	2800

BOTTLE SORTING EXPERT BIG AND CAPABLE



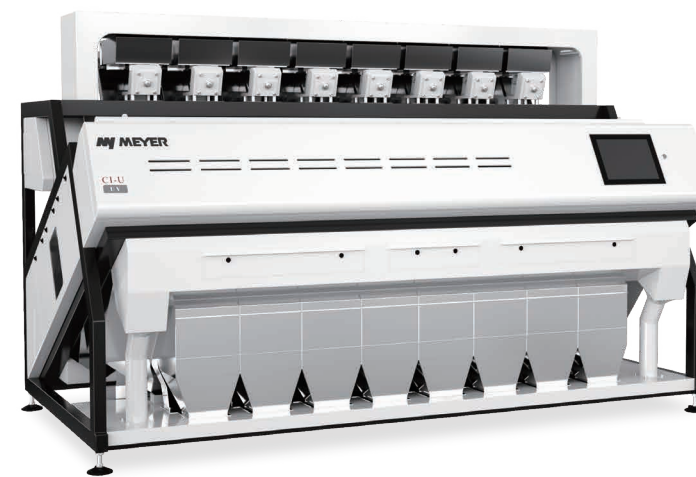
Meyer Color & Polymer Sorter-KL Series

- Specialized for color and polymer sorting of bottles
- Extra-simple operation, easy to learn and operate
- Exclusive removal structure and strong jet maglev ejectors ensure high pure accept rate
- Outstanding throughput, up to 5-7 tons/hrs
- Support re-sorting, higher purification and lower consumption
- Standard and modular design in the intelligent factory

· KL series is used in plastic bottle sorting. Leading bottle sorting tech and multi-spectral identification tech can accurately remove multicolored bottles like light blue, green, red, yellow, porcelain white bottles and others, and non-PET bottles like PVC/PS/PC/PA/PP/PE/ABS and others.

Name	Model	Power (KW)	Voltage (V)	Air pressure (MPa)	Air Consumption (m³/min)	Dimension (L*W*H)(mm)	Weight (kg)
KL	6SXZ-200KL2-GY	8.0	180~240 50Hz	0.6~0.8	<6.5	3630×3165×2445	2500
	6SXZ-280KL2-GY	12.0	180~240 50Hz	0.6~0.8	<9.0	3630×4065×2445	3500

AAA-PET FLAKE SORTING EXPERT, THE FIRST UVL SORTING TECHNOLOGY



Meyer Sorter-CI-U Series

- Sorting aging flakes and fluorescent flakes UVL sorting technology, designed for AAA-PET flakes
- Extra-simple operation, easy to learn and operate
- High pure accept rate, the minimum identification accuracy is up to 0.3mm
- Outstanding output, 2-4 TPH of plastic flakes
- Support re-sorting and triple sorting, higher purification and lower consumption
- Standard and modular design in the intelligent factory

· CI-U series--exclusive UVL identification technology can detect and remove aging flakes and fluorescent flakes in AAA-PET.

Name	Model	Power (KW)	Voltage (V)	Air pressure (MPa)	Air Consumption (m³/min)	Dimension (L*W*H)(mm)	Weight (kg)
CI-U	6SXZ-480CI-GY	4.6	180~240 50Hz	0.6~0.8	<6.5	3108×1700×2030	1300

BELT-TYPE DESIGN FOR SORTING IRREGULAR & ELASTIC PLASTICS



Meyer Color Sorter-K/KS Series

- Suitable for sorting plastic pellets, engineering plastics and ABS
- Extra-simple operation, easy to learn and operate
- Anti-deviation belt design, no need for manual adjustment adjustment and stable operation
- Made of stainless steel, highly resistant to corrosion
- KS series supports re-sorting, higher purification and lower consumption
- Nice sorting performance even in a dusty environment

• K series is the single belt color sorter.KS series is the double-belt color sorter. The smooth transmission structure shows nice color sorting performance for large particles and highly elastic material like plastic pellets and plastic infusion bottles. It supports re-sorting of accepts and rejects to get purer accepts and higher profits.

Name	Model	Power (KW)	Voltage (V)	Air pressure (MPa)	Air Consumption (m³/min)	Dimension (L*W*H)(mm)	Weight (kg)
K	6SXZ-60K3	1.5	180~240 50Hz	0.6~0.8	<1.5	3890×1330×2350	1000
	6SXZ-120K3	2.0	180~240 50Hz	0.6~0.8	<2.0	3890×1730×2350	1200
	6SXZ-240K3	3.0	180~240 50Hz	0.6~0.8	<3.0	3890×2260×2350	1600
KS	6SXZ-480KS3	4.5	180~240 50Hz	0.6~0.8	<6.0	3856×2100×2562	2500

CONFIGURATION

ITEM		CG.P	K	KS	KL	CI	CI-U
Performance	Key Components	15-inch LCD screen	●	●	●	●	●
		Micron-sized superior HD color sensor	●	●	●	●	●
		Infrared InGaAs sensor	—	—	—	●	—
		Compound lighting system	—	—	—	●	—
		Maglev ejector	●	●	●	●	●
	Exclusive Sorting Solutions	Targeted positioning	●	●	●	●	●
		Gentle removal	●	●	●	—	●
	Polymer Sorting	PP/PE	—	—	—	○	—
		PET/non-PET	—	—	—	●	—
	Service Life	Maglev ejector	★★★★★	★★★★★	★★★★★	★★★★★	★★★★★
		LED	★★★★★	★★★★★	★★★★★	★★★★★	—
	Machine Protection	Anti-blockage design	●	●	—	—	●
		Input protection cover	—	—	—	●	—
		Remote separation chamber protection	—	—	●	●	●
		Waterproof and dustproof IP65	—	●	●	—	—
		Worry-free transmission structure	—	●	●	—	—
	Air circuit system	Large air capacity system	●	—	—	●	●
Intelligent	Intelligent System	Extra-simple interface	●	●	●	●	●
		Sorter care	●	●	●	●	●
		Remote commissioning	●	●	●	●	●
		Intelligent self-check	●	●	●	●	●
		Intelligent backup	●	●	●	●	●

Parameters above are tested on the environment of 25℃ and 2% impurities rate and may change in different conditions.
☆: Function strength, ●: Standard, ○: Selection, -: No